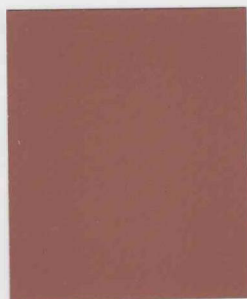


and low-cost subtle shades that add a hint of color to gray concrete. As the leading producer of colors for concrete since 1952, we offer the widest spectrum available.



**SANGRIA**  
1.5 LBS 1117



**TILE RED**  
3 LBS 1117



**BRICK RED**  
4 LBS 160



**SAN DIEGO BUFF**  
1.5 LBS 5237



**SUNSET ROSE**  
1 LB 160



**BAJA RED**  
2 LBS 160



**TERRA COTTA**  
4 LBS 10134



**SPANISH GOLD**  
3 LBS 5084



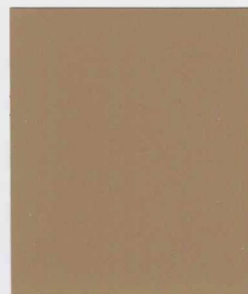
**SOUTHERN BLUSH**  
1 LB 10134



**SALMON**  
2 LBS 10134



**MESA BUFF**  
2 LBS 5447



**PALOMINO**  
3 LBS 5447



**FLAGSTONE BROWN**  
3 LBS 641



**MESQUITE**  
1 LB 677



**TAUPE**  
2 LBS 677



**SIERRA**  
2 LBS 61078



**ADOBE**  
4 LBS 61078



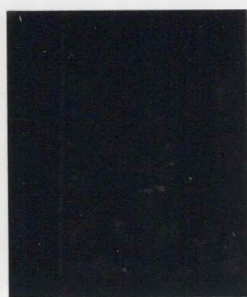
**KAILUA**  
4 LBS 677



**PEWTER**  
1 LB 860



**COBBLESTONE**  
2 LBS 860



**GRAPHITE**  
Interior 3 lbs. 807  
Exterior 7.5 lbs. 860



**WILLOW GREEN**  
3 LBS 5376

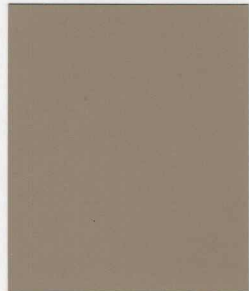


**GREEN SLATE**  
3 LBS 3685

# COLORS FOR CONCRETE

Davis Colors™ mix into any concrete, transforming it into a new design feature for building and paving projects or to enhance appearance around the home. Davis Colors™ are strong, durable and last as long as the concrete. Installation is cleaner and

easier than toppings, stains or coatings and requires less labor. There are bold and intense premium colors, standard colors that make an attractive upgrade for any project,



**SANDSTONE**  
0.75 LB 5237



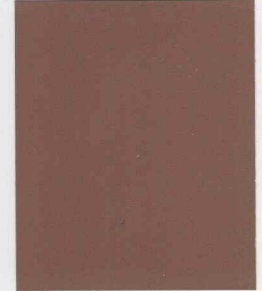
**CANYON**  
0.5 LB 160



**SANTA FE**  
0.75 LB 1117



**MOCHA**  
1 LB 6058



**RUSTIC BROWN**  
2 LBS 6058



**PEBBLE**  
0.5 LB 641



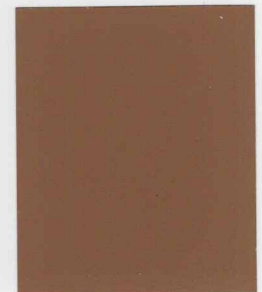
**DUNE**  
0.5 LB 6058



**OUTBACK**  
0.5 LB 677



**SEQUOIA SAND**  
1 LB 641



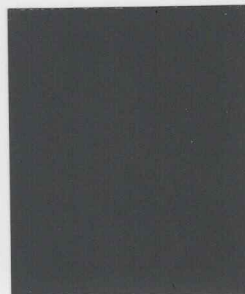
**YOSEMITE BROWN**  
2 LBS 641

**Color name, number and dose-rate to mix with each 94 lb. sack of cement.**

*(Dry dose rates shown, liquid dose rates higher)*



**SILVERSMOKE**  
0.25 LB 8084 \* or 1.25 LBS 860



**LIGHT GRAY**  
0.5 LB 8084 \* or 2.5 LBS 860



**OMAHA TAN**  
1 LB 5084

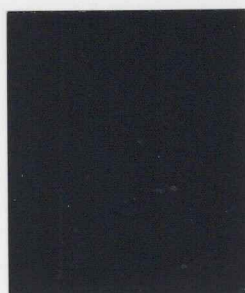


**HARVEST GOLD**  
2 LBS 5084



**Concrete Base Color**

The natural base color of concrete, finishing and curing method determines final color. This card simulates lab samples made with a light broom finish from Type II gray cement, sand and water at 0.56 water/cement ratio for a 4" slump (see uncolored reference at left). Different cements, sand, rock, mixing and job-site conditions and contractor technique can alter color from this card. Concrete is produced from natural materials. Surface variation common to uncolored concrete can impact colored concrete.



**DARK GRAY**  
Interior 1.5 lbs. 807  
Exterior 5 lbs. 860



**BAYOU**  
1 LB 6130



**COCOA**  
2 LBS 6130

\*Caution: 8084 is not compatible with air-entraining admixtures. See back page for more information.



106 LaSalle Street  
 Durham, NC 27705  
 919-383-1203

# CUSTOM MATCH COLORS

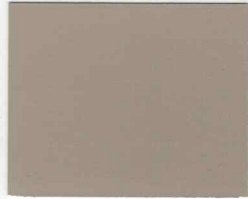


4400 Old Pineville Road  
 Charlotte, NC 28217  
 704-527-3603

## Colors for Concrete • All Decorative Concrete Supplies



**Light Brick Red**  
 1 lb. - 950



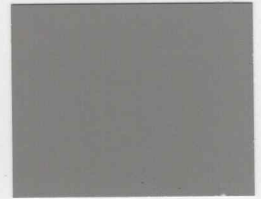
**Light Brown**  
 1 lb. - 970



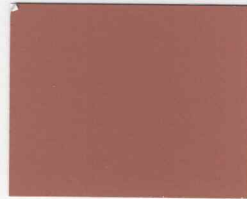
**Light Walnut**  
 1 lb. - 980



**Light Tan**  
 1 lb. - 988



**Light Black**  
 1 lb. - 992



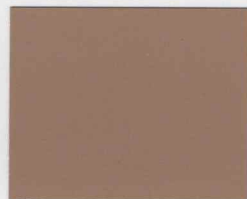
**Brick Red**  
 2 lb. - 950



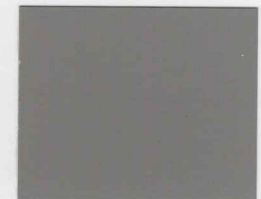
**Brown**  
 2 lb. - 970



**Walnut**  
 2 lb. - 980



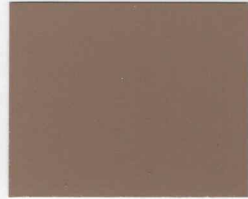
**Tan**  
 2 lb. - 988



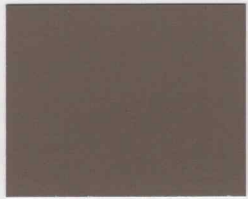
**Black**  
 2 lb. - 992



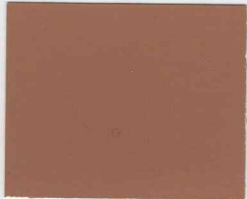
**Dark Brick Red**  
 4 lb. - 950



**Dark Brown**  
 4 lb. - 970



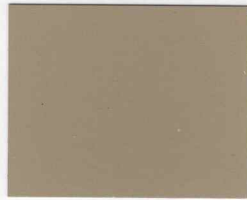
**Dark Walnut**  
 4 lb. - 980



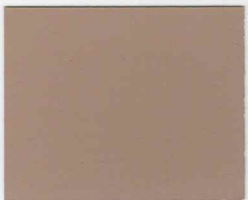
**Dark Tan**  
 4 lb. - 988



**Dark Black**  
 4 lb. - 992



**Light Buff**  
 1 lb. - 960



**Light Topsail**  
 1 lb. - 975



**Light Carmel**  
 1 lb. - 985



**Light Beige**  
 1 lb. - 990



**Graphite**  
 Ext: 7.5 lb. - 992 / Int: 3 lb. - 995



**Buff**  
 2 lb. - 960



**Topsail**  
 2 lb. - 975



**Carmel**  
 2 lb. - 985



**Beige**  
 2 lb. - 990



**Dark Red**  
 4 lb. - 941



**Dark Buff**  
 4 lb. - 960



**Dark Topsail**  
 4 lb. - 975



**Dark Carmel**  
 4 lb. - 985



**Dark Beige**  
 4 lb. - 990



**Green**  
 3 lb. - 999